

# Stamoid

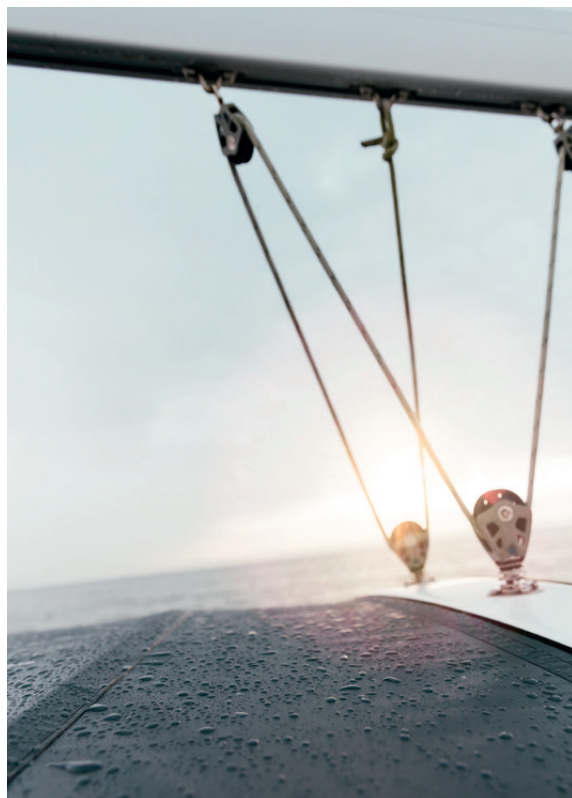
Yachting

Equipment and  
crew protection

*Protección para la  
tripulación y los equipos*



# **Stamoid** | Yachting



**The reference to protect  
your crew and your  
equipment onboard**

***El referente para la  
protección de la tripulación  
y del equipamiento a bordo***

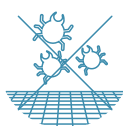
# Stamoid | Yachting



Quick and easy upkeep  
*Mantenimiento rápido y sencillo*



100% waterproof  
*100% impermeable*



Perfect mold resistance  
*Perfecta resistencia al moho*



Total protection against UVB rays and highly resistant to severe weather conditions  
*Protección total contra la radiación UV y gran resistencia a las condiciones climáticas extremas*



Wide range of colors and exclusive choice of long lasting shiny whites  
*Amplia gama de colores y oferta exclusiva de blancos brillantes de larga duración*

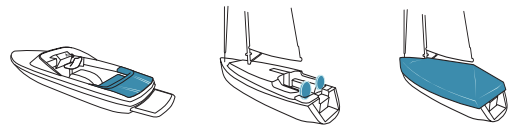


Handling comfort thanks to the lightness of the fabrics  
*Manipulación fácil gracias a la ligereza de los tejidos*



# Stamoid Light

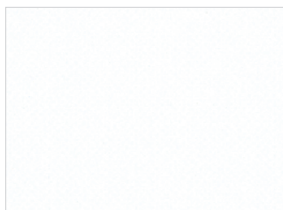
5-year warranty  
5 años de garantía



Cloud grey - *Gris nube*

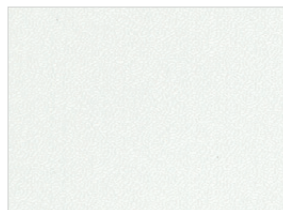
59-102 in • 150-260 cm

**F4128-20218**



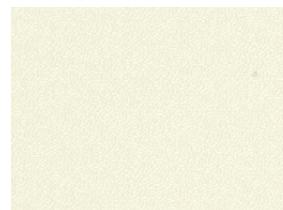
Snow white  
*Blanco nieve*  
**F4128-10309**

59-102 in  
150-260 cm



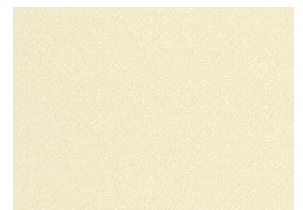
White  
*Blanco*  
**F4128-03244**

59-102 in  
150-260 cm



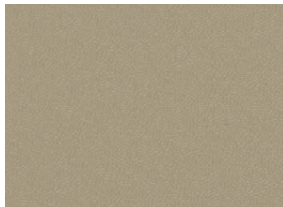
Cream  
*Crema*  
**F4128-10204**

59-102 in  
150-260 cm



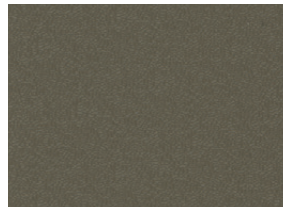
Ivory  
*Marfil*  
**F4128-10081**

59-102 in  
150-260 cm



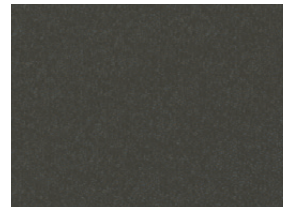
Beige  
*Beige*  
**F4128-01897**

59-102 in  
150-260 cm



Desert  
*Desierto*  
**F4128-20217**

59 in  
150 cm



Taupe  
*Taupe*  
**F4128-20165**

59-102 in  
150-260 cm



Pearl grey  
*Gris perla*  
**F4128-10001**

59-102 in  
150-260 cm



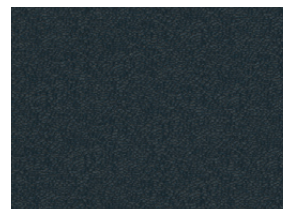
Silver  
*Plata*  
**F4128-10124**

59 in  
150 cm



Cloud grey  
*Gris nube*  
**F4128-20218**

59-102 in  
150-260 cm



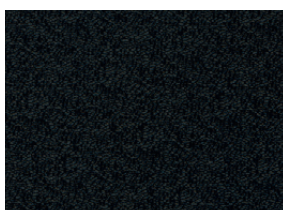
Anthracite  
*Antracita*  
**F4128-20166**

59-102 in  
150-260 cm



Navy  
*Navy*  
**F4128-10235**

59-102 in  
150-260 cm



Black  
*Negro*  
**F4128-00002**

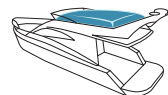
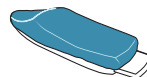
59-102 in  
150-260 cm



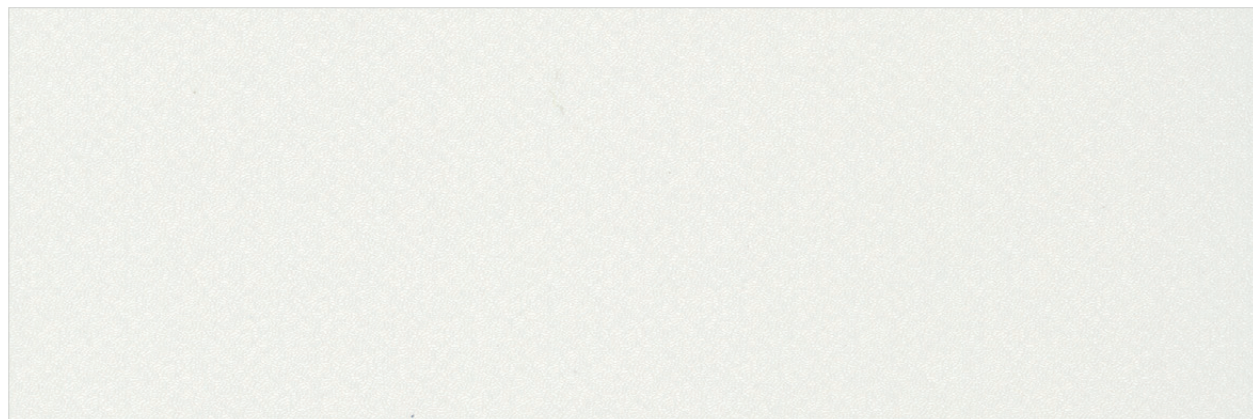
Royal blue  
*Azul royal*  
**F4128-04997**

59-102 in  
150-260 cm

# Stamoid Heavy cover



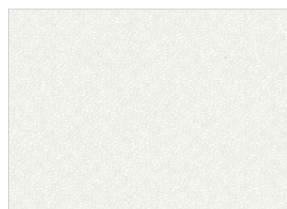
5-year warranty  
5 años de garantía



White - Blanco

102 in • 260 cm

F4313-03244



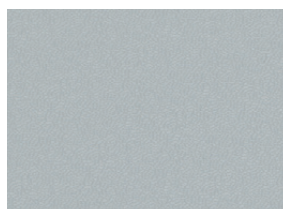
White  
Blanco  
F4313-03244

102 in  
260 cm



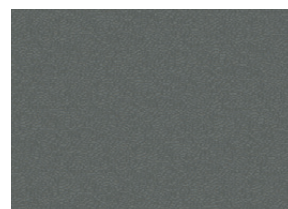
Beige  
Beige  
F4313-01897

102 in  
260 cm



Pearl grey  
Gris perla  
F4313-10001

102 in  
260 cm



Cloud grey  
Gris nube  
F4313-20218

102 in  
260 cm

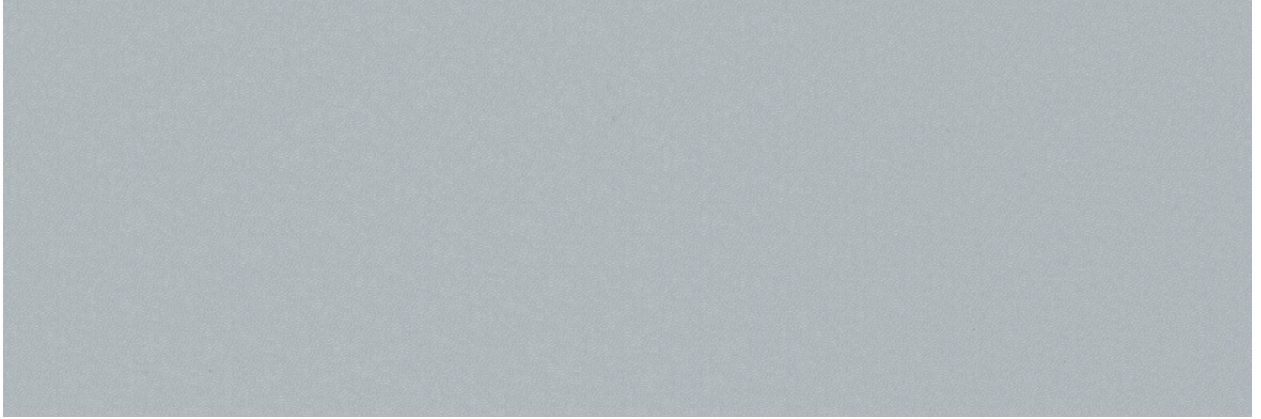
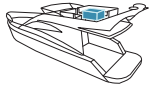
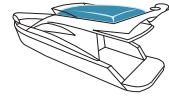
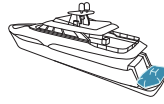


Navy  
Navy  
F4313-10235

102 in  
260 cm

# Stamoid Easy

2-year warranty  
2 años de garantía



Pearl grey - *Gris perla*

102 in • 260 cm

**F4748-10001**



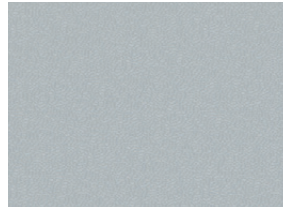
White  
*Blanco*  
**F4748-03244**

102 in  
260 cm



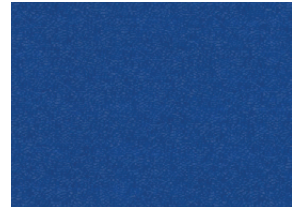
Ivory  
*Marfil*  
**F4748-10081**

102 in  
260 cm



Pearl grey  
*Gris perla*  
**F4748-10001**

102 in  
260 cm



Royal blue  
*Azul royal*  
**F4748-04997**

102 in  
260 cm

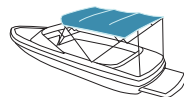
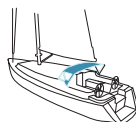


Navy  
*Navy*  
**F4748-10235**

102 in  
260 cm

# Stamoid Top

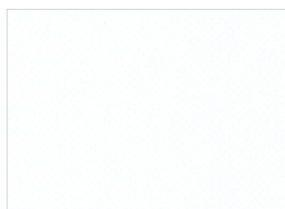
5-year warranty  
5 años de garantía



Desert - *Desierto*

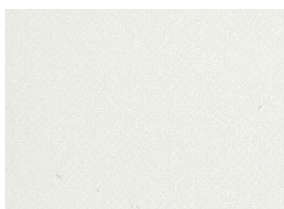
59 in • 150 cm

**F3933-20217**



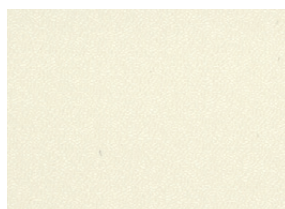
Snow white  
*Blanco nieve*  
**F3933-10309**

59-102 in  
150-260 cm



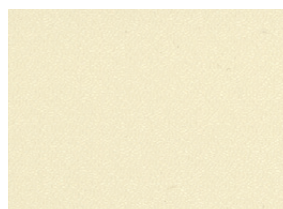
White  
*Blanco*  
**F3933-03244**

59-102 in  
150-260 cm



Cream  
*Crema*  
**F3933-10204**

59-102 in  
150-260 cm



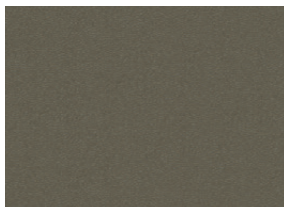
Ivory  
*Marfil*  
**F3933-10081**

59 in  
150 cm



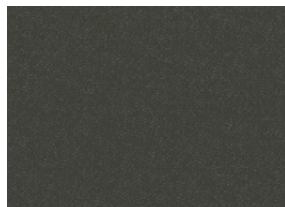
Beige  
*Beige*  
**F3933-01897**

59-102 in  
150-260 cm



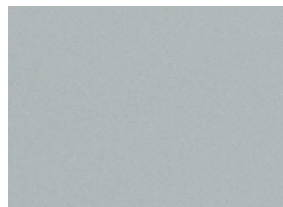
Desert  
*Desierto*  
**F3933-20217**

59 in  
150 cm



Taupe  
*Taupe*  
**F3933-20165**

59 in  
150 cm



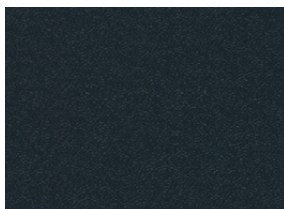
Pearl grey  
*Gris perla*  
**F3933-10001**

59-102 in  
150-260 cm



Cloud grey  
*Gris nube*  
**F3933-20218**

59 in  
150 cm



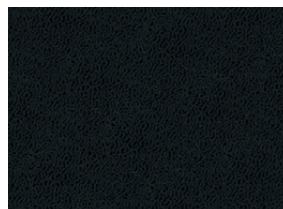
Anthracite  
*Antracita*  
**F3933-20166**

59 in  
150 cm



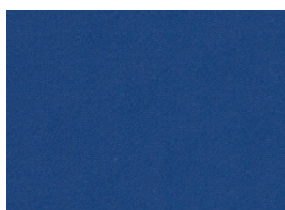
Navy  
*Navy*  
**F3933-10235**

59 in  
150 cm



Black  
*Negro*  
**F3933-00002**

59-102 in  
150-260 cm



Royal blue  
*Azul royal*  
**F3933-04997**

59 in  
150 cm

Stamoid Light F4128	Stamoid Easy F4748	Stamoid Heavy Cover F4313	Stamoid Top F3933
---------------------------	--------------------------	---------------------------------	-------------------------

## Technical properties - Características técnicas

	Stamoid Light F4128	Stamoid Easy F4748	Stamoid Heavy Cover F4313	Stamoid Top F3933	Standards Normas
Coating <i>Recubrimiento</i>	1 side PVC 1 cara PVC	1 side PVC 1 cara PVC	1 side PVC 1 cara PVC	2 sides PVC 2 caras PVC	
Base cloth <i>Soporte</i>	280 Dtex PES HT	1,100 Dtex PES HT 1100 Dtex PES HT	1,100 Dtex PES HT 1100 Dtex PES HT	280 Dtex PES HT	
Weight <i>Peso</i>	8.8 oz/sq.yd 300 g/m <sup>2</sup>	12.7 oz/sq.yd 430 g/m <sup>2</sup>	15.3 oz/sq.yd 520 g/m <sup>2</sup>	12.7 oz/sq.yd 430 g/m <sup>2</sup>	EN ISO 2286-2
Length of rolls <i>Longitud del rollos</i>	32.81-54.68 yd 30 - 50 ml	32.81 yd 30 ml	32.81 yd 30 ml	32.81 - 54.68 yd 30 - 50 ml	
Thickness <i>Espesor</i>	360 microns 0,36 mm	460 microns 0,46 mm	590 microns 0,59 mm	380 microns 0,38 mm	

## Physical properties - Propiedades físicas

Tensile strength (warp/weft) <i>Resistencia a la rotura (urdimbre/trama)</i>	315/315 lbs/2 in 140/140 daN/5 cm	517/517 lbs/2 in 230/230 daN/5 cm	719/781 lbs/2 in 320/350 daN/5 cm	292/292 lbs/2 in 130/130 daN/5 cm	EN ISO 1421
Tear strength (warp/weft) <i>Resistencia al desgarro (urdimbre/trama)</i>	16/18 lbs/2 in 7/8 daN				DIN 53.363
Color light fastness <i>Solidez del color a la luz</i>	>4/5 (1,000 h) >4/5 (1 000 h)				QUVA test according ASTM G 154
UV Filtration <i>Filtración UV</i>	UPF 50+				EN 13758-1+A1
Mold resistance <i>Resistencia al moho</i>	Degree 0, excellent Grado 0, excelente				EN ISO 846-A
Extreme working temperatures <i>Temperaturas extremas de uso</i>	-4°F / +158°F -20°C / +70°C				

## Management system - Sistemas de gestión

Quality - *Calidad*: ISO 9001 • Environment - *Medio ambiente*: ISO 14001 • Energy - *Energía*: ISO 50001 only for F4128 - solo para F4128

## Certifications, labels - Certificados, etiquetas

Smart Coating  
Technology



For - Para F4128, F4748 & F4313



<sup>1</sup> These products don't contain intentionally added PFAS (these products were not formulated or intended to contain a PFAS that impacts a specific function or characteristic to the product).

<sup>1</sup> Estos productos no contienen PFAS añadidos intencionadamente (estos productos no fueron formulados o destinados a contener un PFAS que repercute en una función o característica específica del producto).

<sup>2</sup> Summarizes the group's CSR project focused on human, to align economic performance and positive impact.

<sup>2</sup> Resume el proyecto de RSC del grupo centrado en lo humano, para alinear rendimiento económico e impacto positivo.

The technical data above are average values with a +/- 5% tolerance. The buyer of our products is fully responsible for their application or their transformation concerning any possible third party. The buyer of our products is responsible for their implementation and installation in compliance with standards, codes of practice and safety regulations in force in destination countries. To ensure warranty effectiveness, refer to warranty certificate concerned available on demand. The values quoted above represent results of tests performed in compliance with common design practices and are provided for information only to enable customers to make the best use of our products. Our products are subject to changes prompted by technological developments. We reserve the right to modify their characteristics at any time. The buyer of our products is responsible for checking the validity of the above data. The colours and textures presented are included for information only.

Los datos técnicos indicados son valores medios con una tolerancia de +/- 5%. El comprador de nuestros productos es responsable de su aplicación o tratamiento con respecto a cualquier derecho de terceros. El comprador de nuestros productos también es responsable de su uso e instalación de acuerdo con las normas, reglas del arte y reglamentos de seguridad del país de destino. Para la garantía contractual, consulte nuestro texto de garantía. Los valores mencionados en este documento son los resultados de las pruebas de acuerdo con las prácticas en el campo de los estudios, se dan como una indicación con el fin de permitir a nuestros clientes el mejor uso de nuestros productos. Nuestros productos están sujetos a cambios como resultado del progreso técnico y nos reservamos el derecho de modificar sus características en cualquier momento. Es responsabilidad del comprador de nuestros productos comprobar la validez de los datos anteriores. Los colores y texturas presentadas están dadas a título indicativo.