

About CE

CE Versions of the HM-229B and HM-229W which have the “CE” symbol on the product, comply with the essential requirements of the 2014/30/EU directive for Electromagnetic Compatibility and the 2001/95/EC directive for General Product Safety.

Below statement is for UKCA purpose only

United Kingdom Authorised Importer:
Icom (UK) Ltd.
Address: Blacksole House, Altira Park, Herne Bay, Kent,
CT6 6GZ, U.K.

To obtain the UKCA Declaration of Conformity, please contact Icom UK Limited by email at info@icomuk.co.uk or alternatively call + 44(0) 1227 741741.

Disposal

The crossed-out wheeled-bin symbol on your product, literature, or packaging reminds you that in the European Union, all electrical and electronic products, batteries, and accumulators (rechargeable batteries) must be taken to designated collection locations at the end of their working life. Do not dispose of these products as unsorted municipal waste. Dispose of them according to the laws in your area.

Icom and the Icom logo are registered trademarks of Icom Incorporated (Japan) in Japan, the United States, the United Kingdom, Germany, France, Spain, Russia, Australia, New Zealand, and/or other countries.
COMMANDMIC is a registered trademark of Icom Incorporated.
AQUAQUAKE is a trademark of Icom Incorporated.

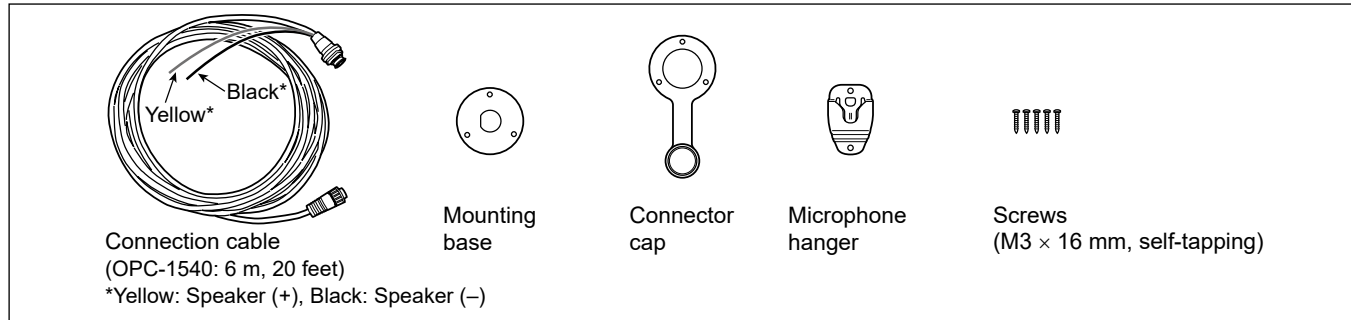
ICOM INSTRUCTIONS

REMOTE-CONTROL MICROPHONE

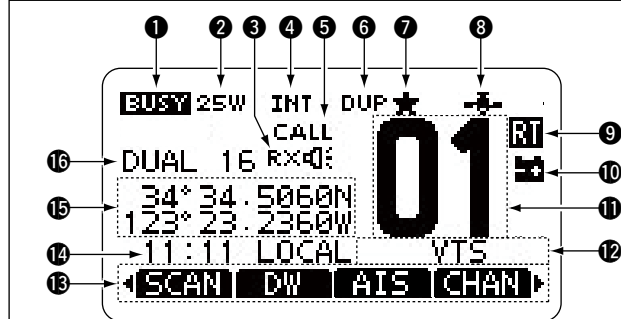
HM-229B HM-229W

Thank you for choosing this Icom product. READ ALL INSTRUCTIONS carefully and completely before using this product. These instructions are for only the HM-229B/HM-229W's own functions.
In this INSTRUCTIONS, the IC-M605EURO is used for an example except for the Highway screen. Some functions may not be usable, and some screens, function names, and softkey names may be different, depending on the transceiver. Refer to the transceiver's manual for the transceiver's functions.

1 Supplied accessories



2 Function display



1 BUSY/TRANSMIT ICON

- “BUSY” is displayed when receiving a signal or when the squelch is open.
- “TX” is displayed when transmitting.

2 POWER ICON

- “25W” is displayed when high power is selected.
- “1W” is displayed when low power is selected.

3 RX SPEAKER ICON

Displayed when in the RX Speaker mode.

4 CHANNEL GROUP ICON

Selected channel group is displayed.

5 CALL CHANNEL ICON

Displayed when the Call channel is selected.

6 DUPLEX ICON

Displayed when a duplex channel is selected.

7 FAVORITE CHANNEL ICON

Displayed when a Favorite (TAG) channel is selected.

8 GPS ICON

- Displayed when the GPS receiver is receiving valid position data.
- Blinks when searching for valid position data.

9 RT (Radio Telephone) ICON

Displayed when in the Radio Telephone (RT) mode.

10 LOW BATTERY ICON

Displayed when the battery voltage is low.

11 CHANNEL NUMBER READOUT

Displays the selected operating channel.

12 CHANNEL NAME FIELD

The channel name is displayed, if entered. (See 5)

13 SOFTWARE KEY ICONS

Displays the assigned function of Software Keys on the front panel.

14 TIME ZONE INDICATOR

- Displays the current time when a GPS receiver is connected, or the time is manually entered.
- When the GPS current time is invalid, “??” blinks every 2 seconds instead of the current time. After 23.5 hours has passed, “NO TIME” will be displayed.
- “??” blinks every 2 seconds instead of the current time, after 3 hours and 59 minutes have passed since you manually entered the time. The manually entered time is held for only 23.5 hours. After that, “NO TIME” will be displayed.
- “LOCAL” is displayed when the offset time is set.
- “MNL” is displayed when the time is manually entered.
- “UTC” is displayed when the GGA, GLL or GNS sentences are received from NMEA 0183.
- The date information is displayed when the RMC GPS sentence formats are included in the GPS signal.
- “NO TIME” is displayed when a GPS antenna is not connected or the time has not been manually entered.

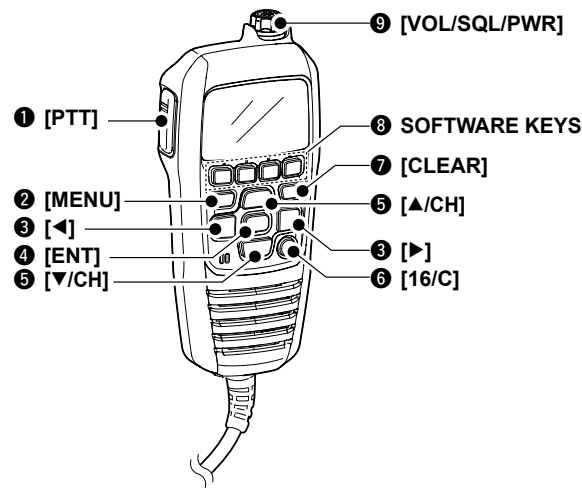
15 POSITION INDICATOR

- The current position is displayed when valid GPS data is received, or you manually entered your position.
- When the GPS position is invalid, “??” blinks every 2 seconds instead of your position. The last position is held for only 23.5 hours. After that, “NO POSITION” will be displayed.
- “??” will blink every 2 seconds instead of position, after 3 hours and 59 minutes have passed since you manually entered your position. The manually entered position is held for only 23.5 hours, and after that, “NO POSITION” will be displayed.
- “NO POSITION” is displayed when no GPS receiver is connected, and no position will be displayed.

16 SCAN INDICATOR

- “SCAN 16” is displayed during a Priority scan, and “SCAN” is displayed during a Normal scan.
- “DUAL 16” is displayed during Dualwatch, and “TRI 16” is displayed during Tri-watch.

3 Panel description



1 PTT SWITCH [PTT]

Hold down to transmit, release to receive.

2 MENU KEY [MENU]

Push to enter or exit the Menu screen.

3 LEFT AND RIGHT KEYS [◀]/[▶]

- Push to scroll the Software Key functions.
- In the character or number entry mode, push to select a character or number on the keypad.

4 ENTER KEY [ENT]

Push to set the entered data, selected item, and so on.

5 UP AND DOWN/CHANNEL SELECT KEYS [▲/CH]/[▼/CH]

- Push to select operating channels, Menu items, Menu settings, and so on.
- While scanning, push to check the Favorite channels, change the scanning direction or manually resume a scan.

6 CHANNEL 16/CALL CHANNEL KEY [16/C]

- Push to select Channel 16.
- Hold down for 1 second to select the Call channel.
- "CALL" is displayed when the Call channel is selected.
- When the Call channel is selected, hold down for 3 seconds to enter the Call channel entry mode.

7 CLEAR KEY [CLEAR]

Push to cancel the entered data, or to exit the Menu screen.

8 SOFTWARE KEYS

Functions can be assigned in the Menu screen. Refer to the transceiver's manual for details.

9 VOLUME AND SQUELCH SWITCH/POWER SWITCH [VOL/SQ/PWR]

- Hold down for 1 second to turn the transceiver ON or OFF.
- Push to toggle between the volume level adjustment, squelch level adjustment, and operating channel selection items.*

*These Items can be assigned in the Menu screen.

- Rotate to adjust the selected item.

CLEAN THE HM-229 THOROUGHLY WITH FRESH WATER after exposure to saltwater, otherwise, the keys and switch may become inoperable due to salt crystallization.

4 Adjusting the Backlight level

Push [BKLT] to display the backlight adjustment screen. Rotate [VOL/SQ/PWR] to adjust the brightness of the HM-229's LCD and key backlight, then push [ENT].

- If no key is pushed for about 5 seconds, the microphone sets the selected backlight level, and returns to the Main screen.
- Push [CLEAR] to cancel.



5 Entering a Channel name

1. Cancel the Dualwatch, Tri-watch or Scan function, if activated.
2. Select a channel.
3. Push [◀] or [▶] until [NAME] is displayed in the Software Key area.
4. Push [NAME] .



5. Enter the channel name in the following manner.
 - Select a character using [VOL/SQ/PWR], or [▲]/[▼]/[◀]/[▶].
 - Push [ENT] to set it.
 - To move the cursor, select either arrow, "←" or "→," then push [ENT].
 - Select "SPACE," then push [ENT] to enter a space.
 - Select "DELETE," then push [ENT] to delete a character.
 - Push [CLEAR] to cancel and return to the previous screen.
6. After entering, push [FIN] to return to the Main screen.

6 Using the AquaQuake™ water draining function

Water in the speaker grill may muffle the sound from the speaker. The AquaQuake Water Draining function removes water from the HM-229's speaker grill by vibrating the speaker.

1. Push [MENU].
2. Select "AquaQuake," then push [ENT].

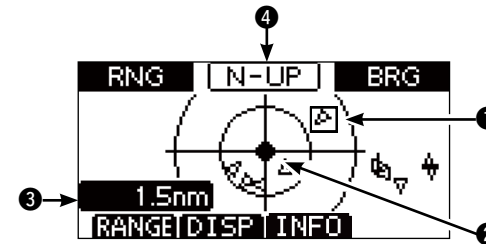


3. Hold down [AQUA] until all water is removed from the speaker grill.
 - A low frequency vibration beep sounds to drain the water, regardless of the volume level setting.
 - ① This function is activated for a maximum of 10 seconds, even if you continue to hold down the Software Key.
4. Push [MENU] to return to the Main screen.

7 Plotter screen

If the transceiver supports, you can use the AIS functions with the HM-229.

1. Push [MENU].
2. Select "AIS", then push [ENT].



1 TARGET BOX

Displays the selected AIS target.

- ① When a target box is displayed, push [ENT] to display the detail screen of the selected AIS target.

2 YOUR VESSEL ICON

Displayed in the center of the screen.

- ① When "N-UP" is displayed, the vessel icon automatically points in the direction you are heading, in 45 degrees steps.
- ① When "COG-UP" is displayed, the vessel icon constantly points to the top of the plotter screen.
- ① When your vessel moves less than 2 knots, the "●" icon is displayed.

3 DISPLAY RANGE

Displays the selected display range.

Push [Range] to select display range.

- ① 0.125, 0.25, 0.5, 0.75, 1.5, 3, 6, 12, and 24 nm (nautical miles) are selectable.

4 DISPLAY TYPE

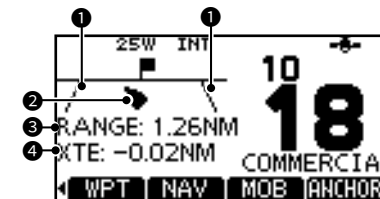
Displays the display type. You can select the display type from the menu screen. Refer to the transceiver's manual for the details.

- ① When "N-UP" is displayed, the top of the plotter screen represents North.
- ① When "COG-UP" is displayed, the top of the plotter screen represents your course heading direction.

8 Highway screen (Example: IC-M510E)

If the transceiver has a navigation function, the Highway screen is displayed on the HM-229.

1. Push [MENU].
2. Select "Highway," then push [ENT].



1 XTE LIMIT LINE

2 YOUR VESSEL ICON

- ① When your vessel moves less than 2 knots per hour speed, ● is displayed.

3 RANGE

Displays the range (RNG) from your vessel to the target.

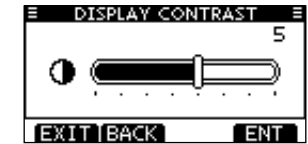
4 XTE

Displays the Cross Track Error.

9 Menu items

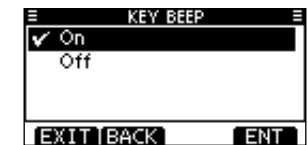
◇ Display Contrast

([MENU] > Configuration > **Display Contrast:**)
Adjusts the contrast of the HM-229's LCD in 8 steps. (Default: 5)



◇ Key Beep

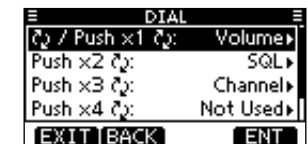
([MENU] > Configuration > **Key Beep:**)
Turn the HM-229's Key Beep function ON or OFF.
On: A beep sounds when you push a key. (Default)
Off: A beep does not sound when you push a key, for silent operation.



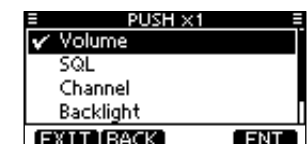
◇ Dial assignment

([MENU] > Configuration > Key Assignment > **Dial**)
Assign items to [VOL/SQ/PWR].
You can assign the Audio volume (Volume), squelch (SQL), channel selection (Channel), and the HM-229's LCD backlight level (Backlight) to any one of 4 sequential positions on Dial.

1. Select the dial's position, then push [ENT].



2. Select the item to assign, then push [ENT].



◇ COMMANDMIC Speaker

([MENU] > Configuration > **COMMANDMIC SP:**)
Select the speaker to use when the HM-229 is connected to the transceiver.

Internal Speaker: Turns ON the transceiver's internal speaker. (Default)

External Speaker: Turns ON the HM-229's external speaker.



NOTE: Regardless of this setting, the speaker of the microphone supplied with the transceiver is ON.