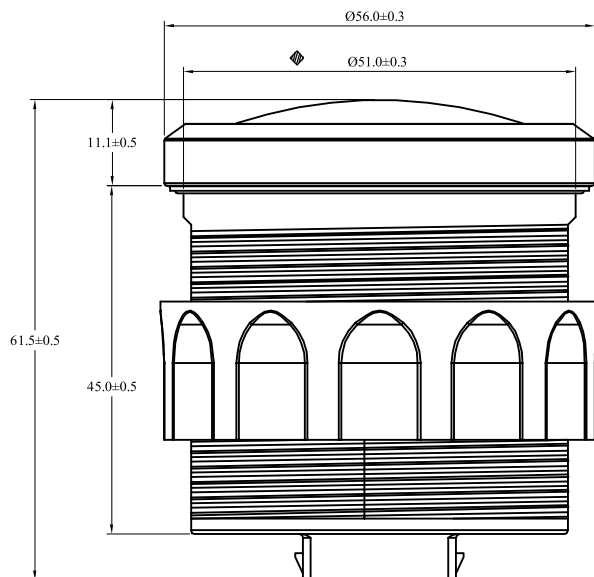
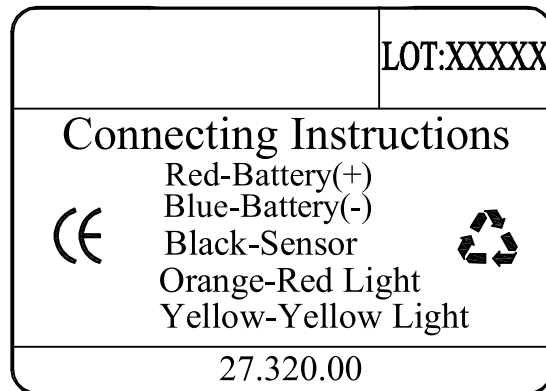
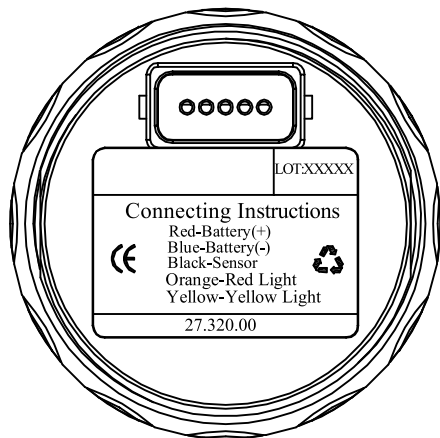


(The item marked special characteristic symbol in the drawing must be controlled)

- 4、 Refer to attached table for customer designated special characteristic symbols when applicable.

[illegible]


Technical description:

test data	scale	E	1/4	1/2	3/4	F	
	input signal (Ω)	0	50	89	130	190	
	Inspection standard	Inspection standard refers to Gauge's					

1. Plug Type:XH2.5-5PIN ;



TOLERANCE CLASS	FROM 0.5 UP TO 3	OVER 3 UP TO 6	OVER 6 UP TO 30	OVER 30 UP TO 120	OVER 120 UP TO 400	OVER 400 UP TO 1000
ISO 2768 M	±0.1	±0.1	±0.2	±0.3	±0.5	±0.8

	MATERIAL:		COLOUR:	PROJECT:	
	ENGINEERED:	ChenY	Jul.27,2015	PART NAME:	
	CHECKED:			DRAWING NO:	ISSUE: 02
	APPROVED:				
	PROJECTION		SIZE: A4	CUSTOMER NO:	
	WEIGHT: N/A		SCALE: 1:1	UNIT: mm	SHEET NO: 1 OF 1